

LED UFO High bay light



Specification

Product Name	LED UFO Highbay light
Product Model	UFO-JG-200W
Version No.	V01
Specification No.	Spec-UFO-JG-200W
Date	2020.09.11

Catalogue

Feature and range of application	-----page 3
Figure and size	-----page 4
Installation Guidance	-----page 5
Main parameter	-----page 6
Intensity Distribution Curve	-----page 7
Temperature test repor	-----page 8
package information	-----page 9
Warranty and After-sales service	-----page 10

■ 1. character and application

This product is made of all-aluminum material, which is durable and has good heat dissipation, thus effectively prolonging the service life of the product. The installation is convenient and simple, and the lifting ring can be directly hung on the hook. The lamp is suitable for installation at a height of 8-15m.

■ 2. Light source characteristics

Adopt domestic famous brand SMD light source, which has high brightness, small light attenuation and longer service life.

■ 3. Power supply characteristics

The scheme of high stability and constant current is adopted, which has the characteristics of over-temperature protection, wide voltage range, high PF, high efficiency and good heat dissipation effect.

■ 4. Heat sink feature

Adopt high-purity aluminum radiator with high thermal conductivity. The radiator is specially designed, taking aerodynamics and hydromechanics into full consideration, maximizing the heat dissipation area and the efficiency of heat exchange with cold and hot air, so that the heat generated by the light source can be efficiently emitted and the reasonable temperature can be maintained, thus ensuring the stability of the product function and prolonging its service life.

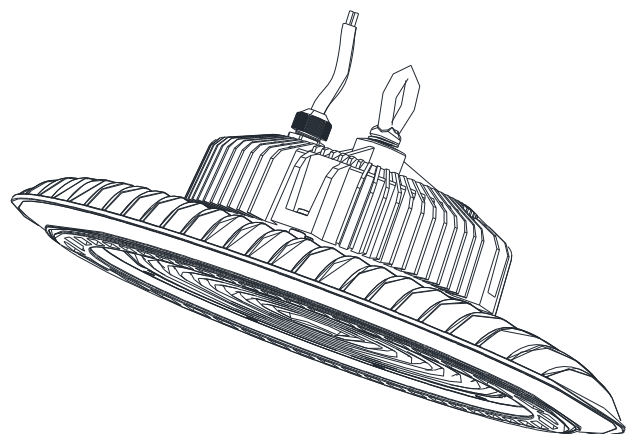
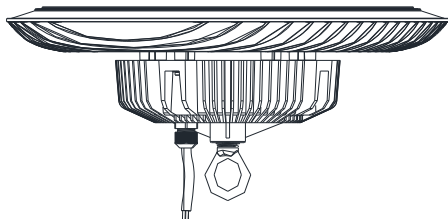
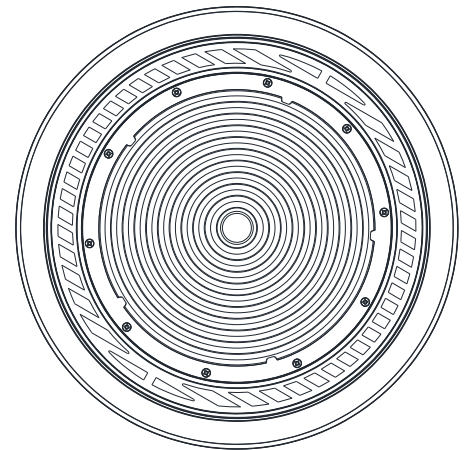
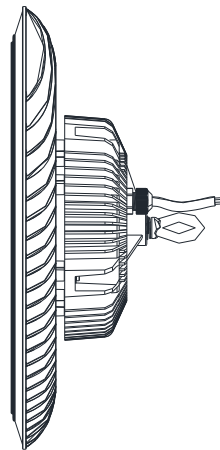
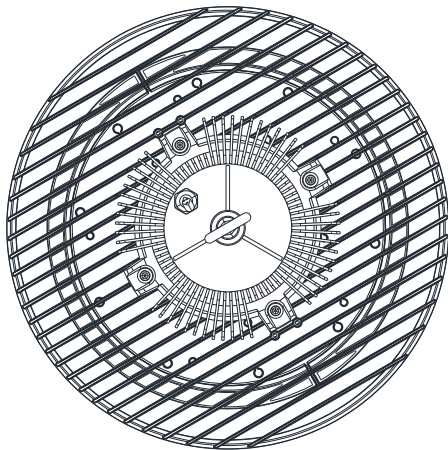
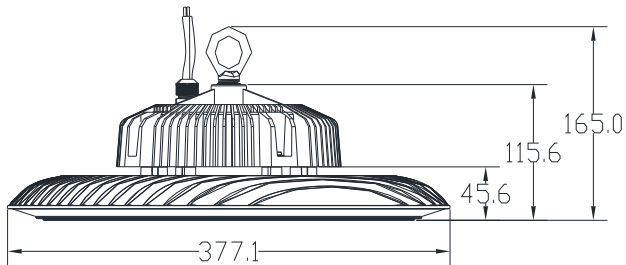
■ 5. Installs Way

Hoisting

■ 6. product application

It is suitable for supermarkets, large workshops, steel mills, warehouses, highway toll stations, gas stations, large supermarkets, exhibition halls, gymnasiums, bus waiting rooms, railway station waiting rooms and other places requiring high space lighting.

Figure and size of Lamp body : $\Phi 377.1\text{mm} * 165.0\text{ mm}$



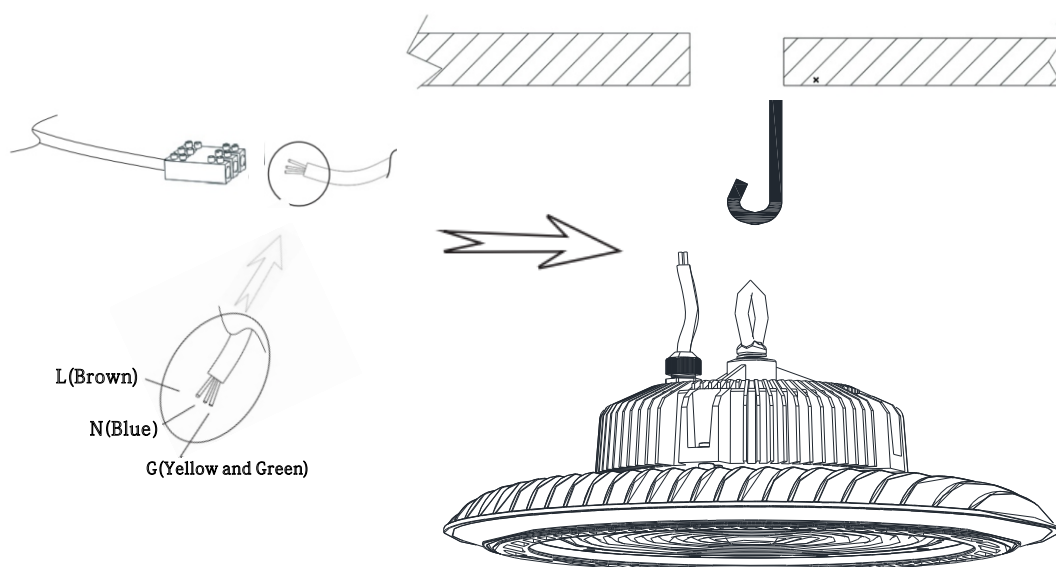
Direction for using:

- 1.The working voltage of the product is AC100V-277V 50/60Hz. Do not exceed the working voltage range.
- 2.As the lamp is plastic PC lens which is easy to damage, please handle it with care and do not put it under heavy pressure when handling and storing.

Installation instructions:

1. When installing lamps and lanterns, the wiring and wiring place shall be sealed to prevent electric leakage. Do not electrify during wiring.
- 2.When external power lines are connected, corresponding waterproof and leakage prevention measures must be taken.
- 3.It shall not violate any fire regulations when used the lamp.
- 4.Please employ a professional electrician to install it. The cable should be 0.75-1mm² three-core cable ,the brown wire is " L " wire, the blue wire is "N"wire, and the yellow-green wire is the "PE".)

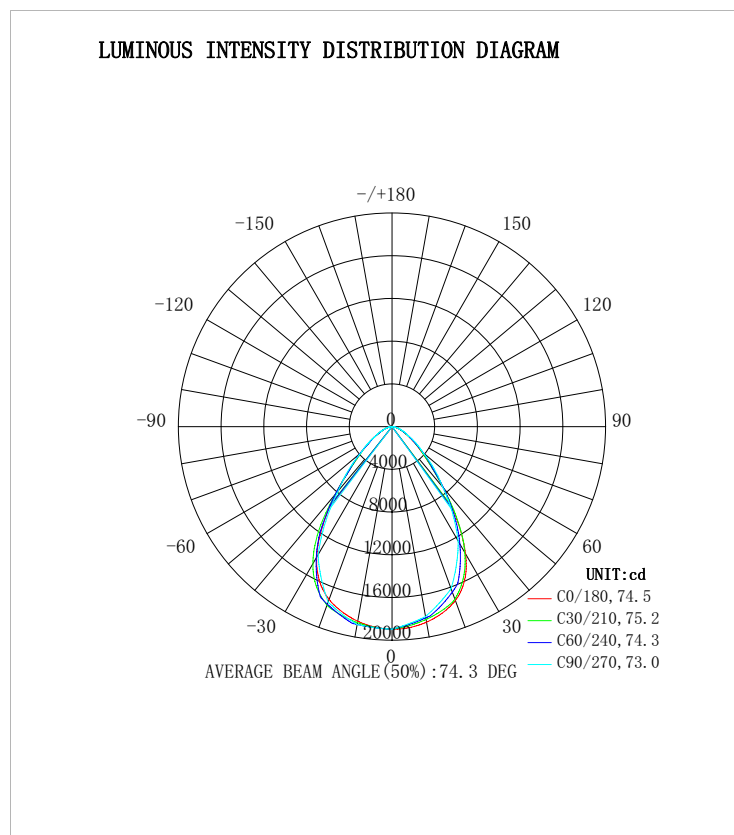
Installation diagram:



Main parameters

Product series	UFO-J G-200W
Input voltage	AC 100-277V ~ 50/60Hz
Power	200W±5%
Light effect	120-140 lm/W
Luminous flux	24000-28000 lm
light emitting diode	600pcs * SMD2835
Color temperature	6000k/4000k/3000k
Color rendering index	Ra > 70
Color tolerance adjustment	≤10SDCM
Power factor	≥0.95
THD	≤15%
Efficiency	≥88%
Working temperature	-25℃— +40℃
Service life	30000 H
IK/IP protection level	IK08/IP65
Insulation grade	Class I
Surge protection	4KV
Installs Way	Hoisting
External dimensions	φ377.1mm * H165.0mm
Net weight	3.65 kg
Gross weight	4.12kg
Size of Carton	385mm*385mm*165mm

Surface of intensity distribution:



Flux out:18411 lm

Height	Eavg, Emax	Angle:72.80deg	Diameter
1m	10703, 18963lx		147.44cm
2m	2676, 4741lx		294.88cm
3m	1189, 2107lx		442.33cm
4m	668.9, 1185lx		589.77cm
5m	428.1, 758.5lx		737.21cm
8m	167.2, 296.3lx		1179.53cm
10m	107.0, 189.6lx		1474.42cm
12m	74.33, 131.7lx		1769.30cm
14m	54.61, 96.75lx		2064.19cm
16m	41.81, 74.08lx		2359.07cm

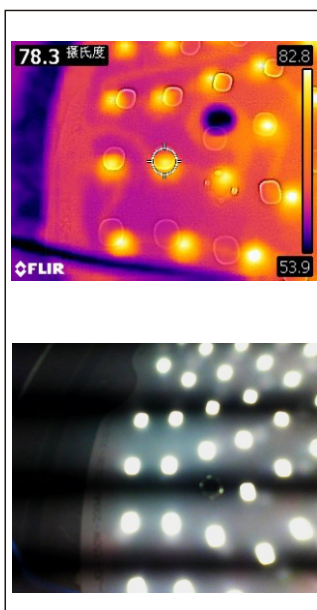
Note: The Curves indicate the illuminated area and the average illumination when the luminaire is at different distance.

Temperature test report

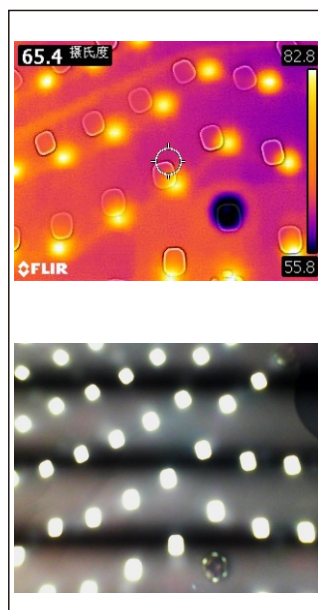
Product Name	position	Temperature	Ambient temperature	Temperature rise
UFO-JG-200W	LED junction	78.3 °C	31.9 °C	46.4 °C
	PCB	65.4 °C	31.9 °C	33.5 °C
	housing	63.3 °C	31.9 °C	31.4 °C
	Driver	51.9 °C	31.9 °C	20.0 °C

Thermal imagery

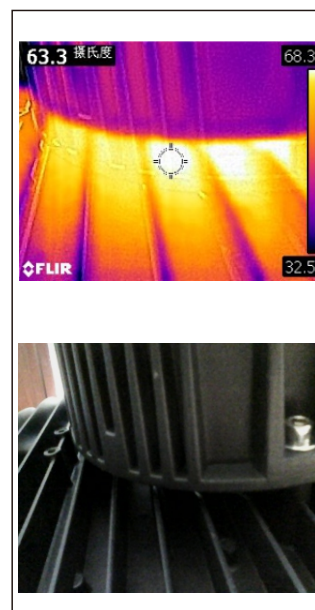
LED junction



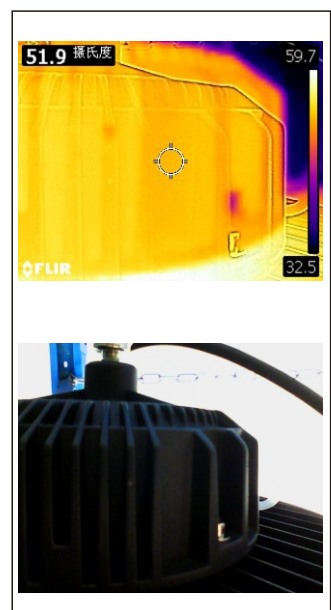
PCB



housing



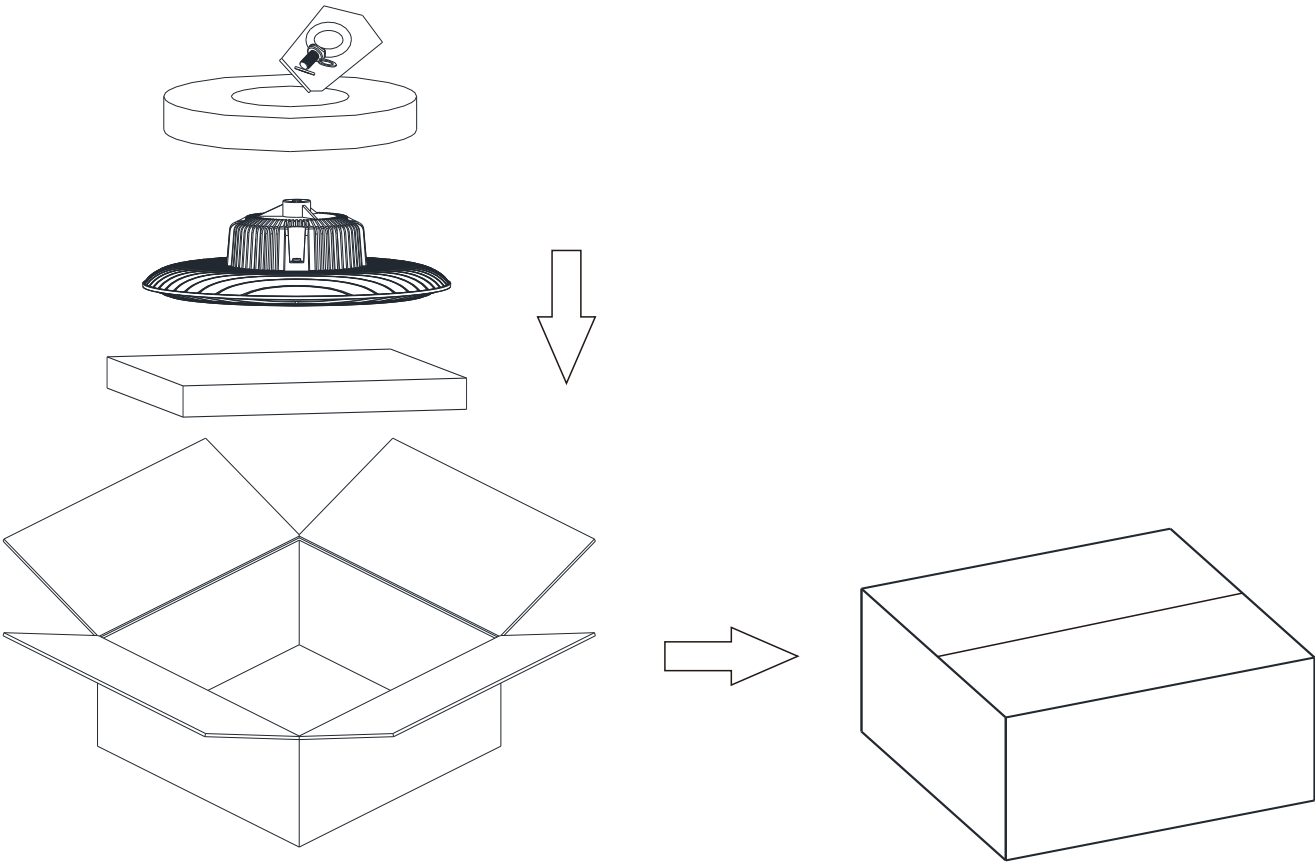
Driver



Packing information

Product Series	UFO-JG-200W
Size of Carton	385mm*385mm*165mm
Packing quantity	1 pcs/carton
Net weight	3.65 kg
Gross weight	4.12 kg

Packing diagram



Maintenance and repair instructions :

1. Please make sure that the power has been cut off before repairing the lamp.
2. Clean the PC cover of the lamps regularly to keep good light transmittance.
3. Regularly clean the dust of the outer shell of the lamp to maintain good heat dissipation performance.
4. Do not clean with water or corrosive solution, but rather with a dry rag.
5. Avoid storing and using lamps in corrosive environment or environment containing harmful substances, such as sulfide, halide and phthalate.
6. When installing and maintaining lamps, do not look directly at the light source.

Quality assurance and after-sales service:

Under normal use conditions, quality assurance is based on the correct preservation, installation, use and maintenance of products; Product damage caused by improper installation and use and violation of product operation regulations is not within the scope of this guarantee; For the quality problems during the quality warranty period, the company will choose to repairing, repairing parts or repairing new products during the warranty period; If the warranty period exceeds, materials and labor costs will be properly charged. The product quality problems caused by natural factors and environmental factors are not covered by the warranty.