

LED UFO High bay light



Specification

Product Name	LED UFO Highbay light
Product Model	UFO-JG-150W
Version No.	V01
Specification No.	Spec-UFO-JG-150W
Date	2020.09.11

Catalogue

Feature and range of application	-----page 3
Figure and size	-----page 4
Installation Guidance	-----page 5
Main parameter	-----page 6
Intensity Distribution Curve	-----page 7
Temperature test repor	-----page 8
package information	-----page 9
Warranty and After-sales service	-----page 10

■ 1. character and application

This product is made of all-aluminum material, which is durable and has good heat dissipation, thus effectively prolonging the service life of the product. The installation is convenient and simple, and the lifting ring can be directly hung on the hook. The lamp is suitable for installation at a height of 6-12m.

■ 2. Light source characteristics

Adopt domestic famous brand SMD light source, which has high brightness, small light attenuation and longer service life.

■ 3. Power supply characteristics

The scheme of high stability and constant current is adopted, which has the characteristics of over-temperature protection, wide voltage range, high PF, high efficiency and good heat dissipation effect.

■ 4. Heat sink feature

Adopt high-purity aluminum radiator with high thermal conductivity. The radiator is specially designed, taking aerodynamics and hydromechanics into full consideration, maximizing the heat dissipation area and the efficiency of heat exchange with cold and hot air, so that the heat generated by the light source can be efficiently emitted and the reasonable temperature can be maintained, thus ensuring the stability of the product function and prolonging its service life.

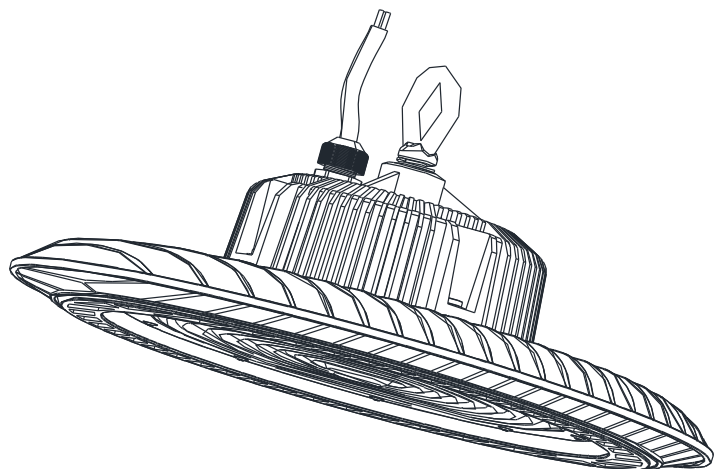
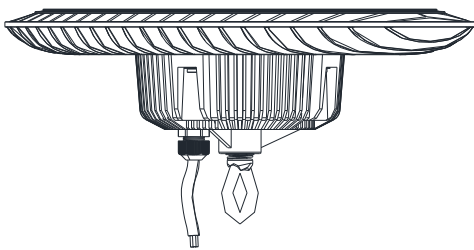
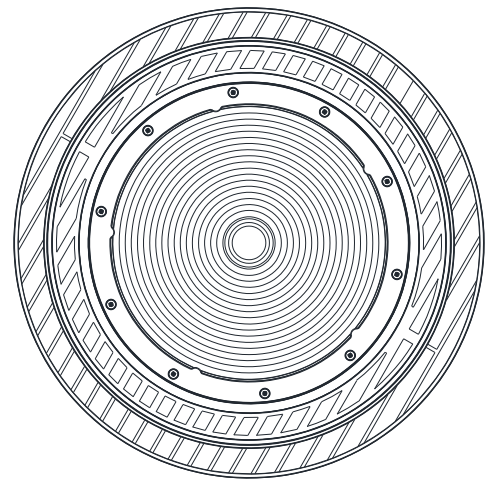
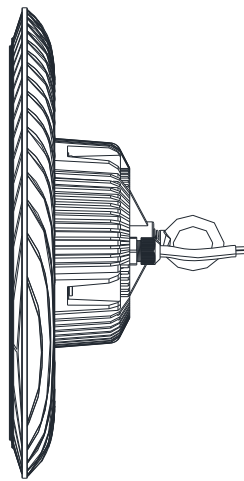
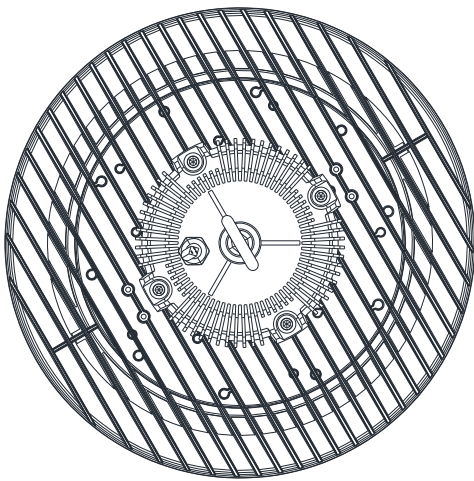
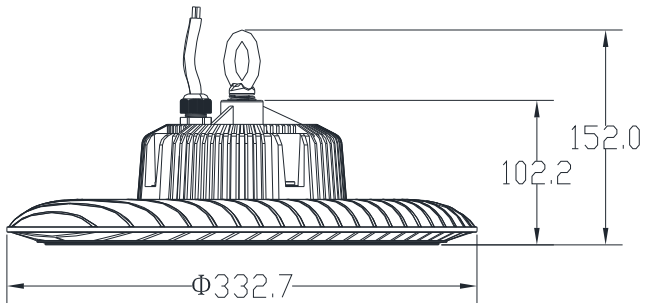
■ 5. Installs Way

Hoisting

■ 6. product application

It is suitable for supermarkets, large workshops, steel mills, warehouses, highway toll stations, gas stations, large supermarkets, exhibition halls, gymnasiums, bus waiting rooms, railway station waiting rooms and other places requiring high space lighting.

Figure and size of Lamp body : $\Phi 332.7\text{mm} * 152.0\text{ mm}$



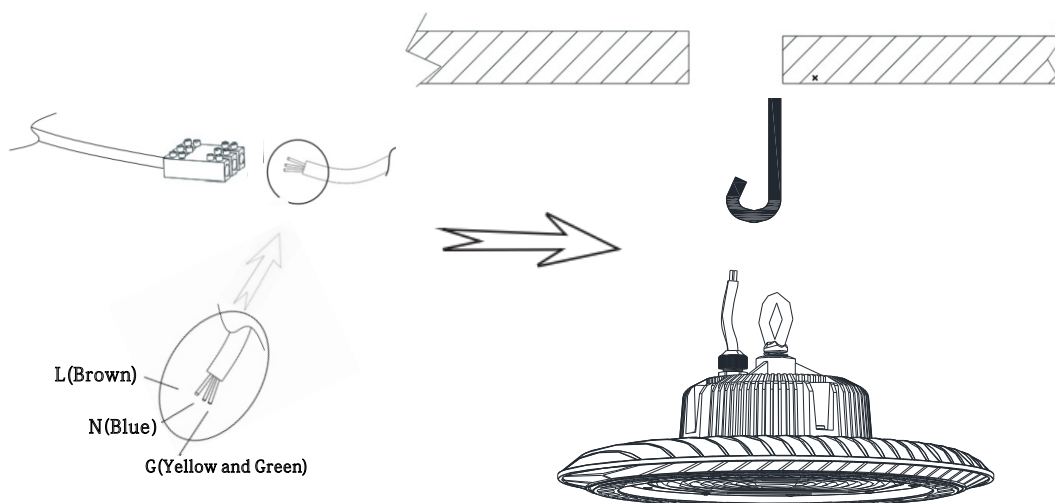
Direction for using:

- 1.The working voltage of the product is AC100V-277V 50/60Hz. Do not exceed the working voltage range.
- 2.As the lamp is plastic PC lens which is easy to damage, please handle it with care and do not put it under heavy pressure when handling and storing.

Installation instructions:

1. When installing lamps and lanterns, the wiring and wiring place shall be sealed to prevent electric leakage. Do not electrify during wiring.
- 2.When external power lines are connected, corresponding waterproof and leakage prevention measures must be taken.
- 3.It shall not violate any fire regulations when used the lamp.
- 4.Please employ a professional electrician to install it. The cable should be 0.75-1mm² three-core cable ,the brown wire is " L " wire, the blue wire is "N"wire, and the yellow-green wire is the "PE".)

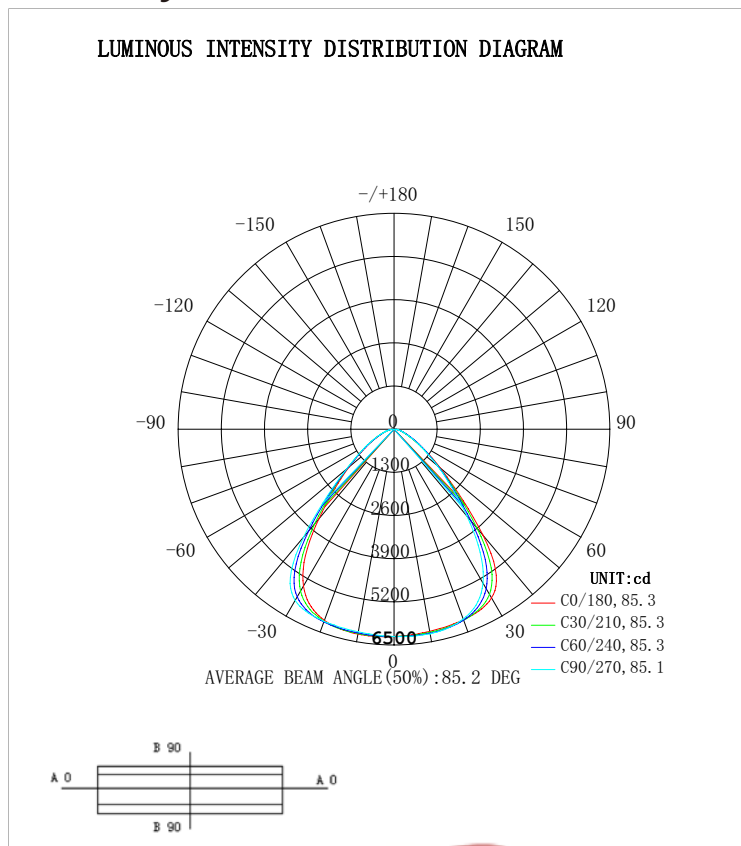
Installation diagram:



Main parameters

Product series	UFO-J G-150W
Input voltage	AC 100-277V ~ 50/60Hz
Power	150W±5%
Light effect	120-140 lm/W
Luminous flux	18000-21000 lm
light emitting diode	450pcs * SMD2835
Color temperature	6000k/4000k/3000k
Color rendering index	Ra > 70
Color tolerance adjustment	≤10SDCM
Power factor	≥0.95
THD	≤15%
Efficiency	≥88%
Working temperature	-25℃— +40℃
Service life	30000 H
IK/IP protection level	IK08/IP65
Insulation grade	Class I
Surge protection	4KV
Installs Way	Hoisting
External dimensions	φ332.7mm * H152.0mm
Net weight	2.83 kg
Gross weight	3.34kg
Size of Carton	345mm*345mm*155mm

Surface of intensity distribution:



Flux out: 8869 lm

Height	Eavg, Emax	Angle: 85.20deg	Diameter
1m	3246, 6284lx		183.92cm
2m	811.6, 1571lx		367.84cm
3m	360.7, 698.2lx		551.77cm
4m	202.9, 392.7lx		735.69cm
5m	129.9, 251.3lx		919.61cm
8m	50.73, 98.18lx		1471.38cm
10m	32.46, 62.84lx		1839.22cm
12m	22.54, 43.64lx		2207.06cm
14m	16.56, 32.06lx		2574.91cm
16m	12.68, 24.54lx		2942.75cm

Note: The Curves indicate the illuminated area and the average illumination when the luminaire is at different distance.

Temperature test report

Product Name	position	Temperature	Ambient temperature	Temperature rise
UFO-JG-150W	LED junction	77.6 °C	31.2 °C	46.4 °C
	PCB	69.7 °C	31.2 °C	38.5 °C
	housing	67.8 °C	31.2 °C	36.6 °C
	Driver	65.6 °C	31.2 °C	34.4 °C

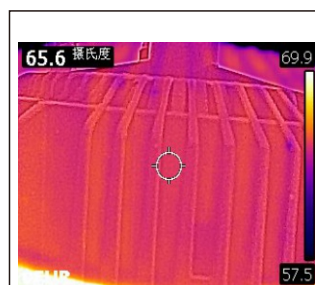
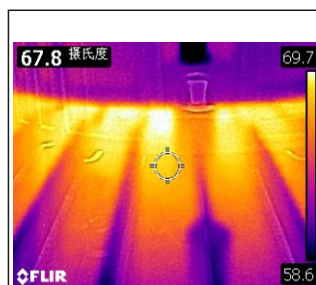
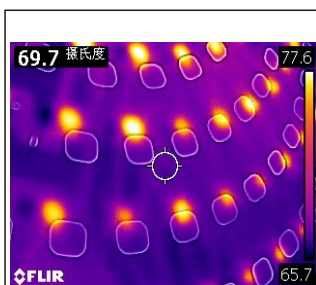
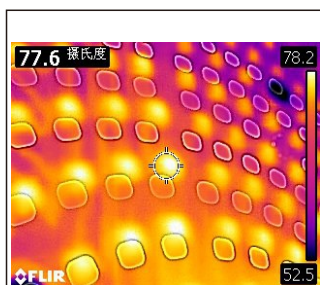
Thermal imagery

LED junction

PCB

housing

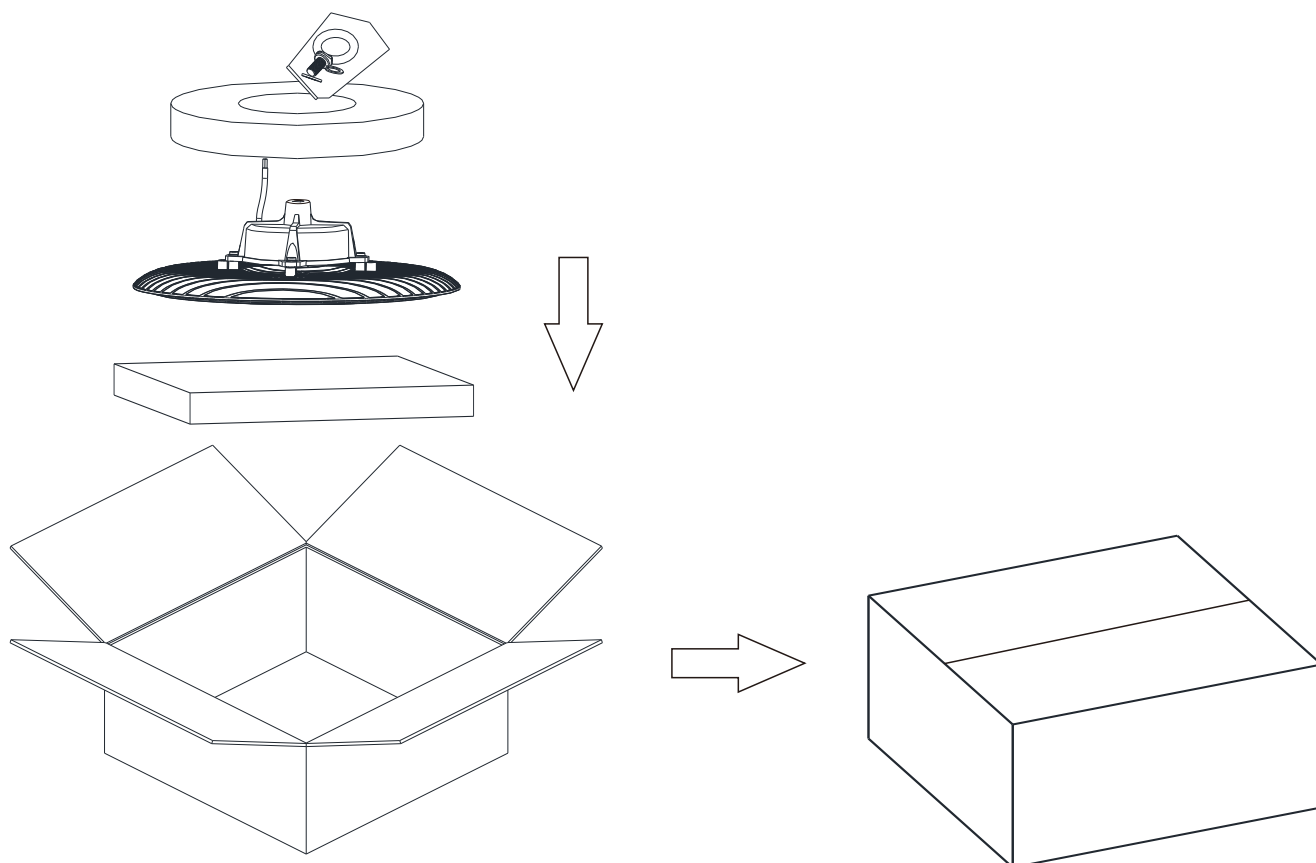
Driver



Packing information

Product Series	UFO-JG-150W
Size of Carton	345mm*345mm*155mm
Packing quantity	1 pcs/carton
Net weight	2.83kg
Gross weight	3.34 kg

Packing diagram



Maintenance and repair instructions :

1. Please make sure that the power has been cut off before repairing the lamp.
2. Clean the PC cover of the lamps regularly to keep good light transmittance.
3. Regularly clean the dust of the outer shell of the lamp to maintain good heat dissipation performance.
4. Do not clean with water or corrosive solution, but rather with a dry rag.
5. Avoid storing and using lamps in corrosive environment or environment containing harmful substances, such as sulfide, halide and phthalate.
6. When installing and maintaining lamps, do not look directly at the light source.

Quality assurance and after-sales service:

Under normal use conditions, quality assurance is based on the correct preservation, installation, use and maintenance of products; Product damage caused by improper installation and use and violation of product operation regulations is not within the scope of this guarantee; For the quality problems during the quality warranty period, the company will choose to repairing, repairing parts or repairing new products during the warranty period; If the warranty period exceeds, materials and labor costs will be properly charged. The product quality problems caused by natural factors and environmental factors are not covered by the warranty.